

An underwater photograph showing a vibrant coral reef in the foreground with various types of coral and small fish swimming around. The water is clear and blue, with sunlight filtering through from the surface, creating a shimmering effect. The background shows the deep blue of the open ocean.

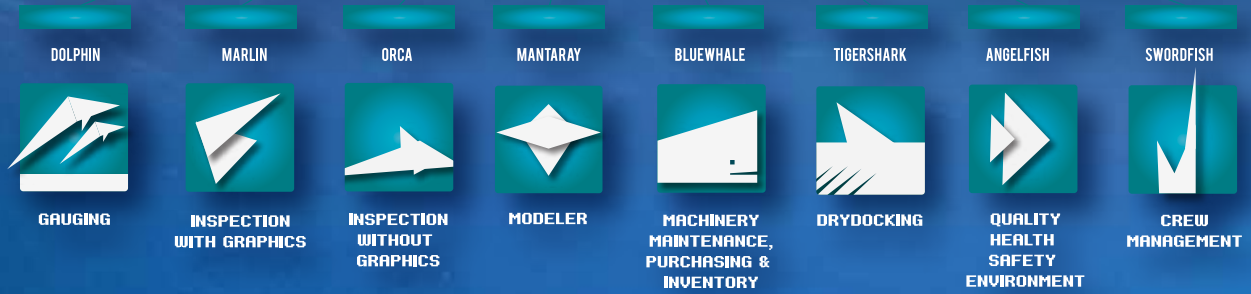
WIDE OCEAN

FLEET MANAGEMENT SYSTEM

Wide Ocean is a Fleet Management System for Owners/Operators to maintain the structural components, the machinery and the management of the crew of a fleet of marine assets such as ships and offshore structures.

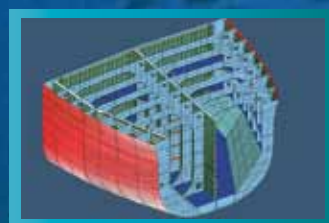
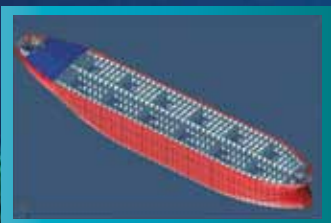
The system is a multi-user, modular, enterprise application that covers the principle aspects of asset's operation and provides a comprehensive data repository that caters to systematically tracking the condition of the asset.

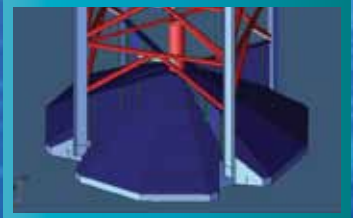
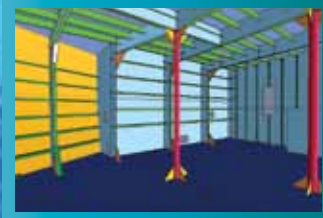
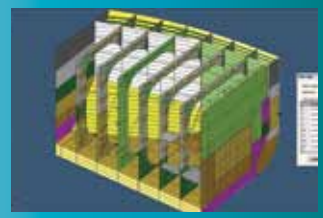
WIDE OCEAN



STRUCTURAL MAINTENANCE

- Campaign Creation, Survey Planning & Tracking
- Inspection of Critical Areas and Recording of Critical Area Findings
- Creation of Gauging Scope and Recording Gauging Readings
- Identification of Substantially Corroded areas via Lists and Colour Maps
- Generation of Life Graphs for structures
- Recording Anomalies/Damage in 3D by Graphical Area Mark Up
- Planning of Anomaly/Damage for its Closure by Graphical Area Mark Up
- Generation of Bill of Material for Structural Repairs
- Anomaly Closure/Resolution
- Recording Inspection of General Findings and Compartment Scoring
- Assessment of Coating Condition and generation of work scope for Coating Repairs
- Recording Leg Condition data for Jack up Rigs
- Recording Pitting Condition
- Assessment of Anode Conditions and Recording Anode Findings
- Section Modulus and Steel Weight Calculator
- Calculation of Coating Surface Area and Volume of Paint
- Extensive reports supporting all functions
- 3D definition and rendering of the asset structure
- 3D viewing of structure within a compartment
- Predefined Stiffener Library to International Standards
- Fully customizable Stiffener, Bracket and Tube Shape Library
- AutoCad based modeling operation with sophisticated checking tools
- Model geometry in XML format for easy portability
- Navigation of 3D model and display of structural properties





MACHINERY MAINTENANCE

- Role based dashboard view
- Creation, monitoring and execution of Periodical and Running Hours based maintenance work and dry dock tasks
- Captures location-wise spares and maintains inventory level
- Auto indent generation for spares below re-order level with approval process workflow
- Request for Quotation, generation of comparative statements, vendor selection and creation of Purchase Order
- Ordering Provisions, Bunkers & Lubes based on Budget
- Audit, Incident, Drills and Inspection Reports. Auto generation of Corrective Action associated with Safety Management System

CREW MANAGEMENT

- Categorization of staff
- Creation of Crew details including Contract, Biological details and Certificates
- Provision for Leave and Loan details along with Approval Level
- Creation and Maintenance of Duty Roster and Attendance Details
- Generation of Travel Details of Personnel along with Reliever Plan
- Creation of Pay Slip
- Captures Appraisal, Promotion, Training and Certificate details

LIST OF SERVICES

- 3D Model Creation of all types of assets
- Deployment and configuration of the application
- Training
- Historical Data Entry
- Data Entry support for current inspections
- Enhancements and customization of the application
- Annual Maintenance of the application
- Communication gateway for third party software

WIDE ADVANTAGES

- Significant reduction in cost through minimizing wastage in Paint. The software allows accurate calculation of coating surface area and paint volumes using 3D model.
- The software enables accurate tracking of the health of the asset facilitating superior management of corroded structures and repairs, which increases the life span of the asset and also reduces the dry docking requirements, increasing the productive days.
- The 3D model reduces the necessity of referring to hard copy drawings, thereby saving valuable man hours.
- The software facilitates transparency in the inspection and maintenance process. This provides for superior management control.
- Better cost estimate and control over the gauging contractors through generation of gauging scope of work.
- Significant cost reduction through accurate calculation of the steel weight for repairs using the geometry of the 3D mark up on the model, thereby reducing steel wastage significantly.
- Stores and preserves the history of valuable data throughout the life cycle of an asset in the central server which can be accessed and analyzed by various groups of employees of the organization, time to time, for further assessment of the condition of the asset.
- It facilitates the process of routine inspection by class and insurance.
- Minimizes time to prepare dry-dock specifications.
- Evaluates costs/inventory across entire fleet.
- Shortens procurement cycle.
- Documents compliance with internal procedures.
- Reduces communication costs.
- Interfaces data with external financial systems.

AXSYS TECHNOLOGIES

Axsys Technologies is a Marine Engineering & Design Services and Marine IT Services Company, which consolidates exceptional levels of competencies spanning the entire marine domain.

Professionally managed, Axsys is a vital one-stop source of services from detailed engineering to fleet management for customers in the marine industry.

Axsys Technologies' customers are spread over the USA, Europe, the Middle East, South and South East Asia. The central operation in Kolkata is the hub of a robust, composite capability. It is the partner of choice in executing large volume projects dependent on diversified services and end-to-end solutions.

Established in 2000, Axsys has modeled over 300 ships and 50 offshore structures, and carried out stability calculations for over 80 vessels.



AXSYS
TECHNOLOGIES

THE POWER OF PURE EXPERTISE

www.wideocean.co.in

Axsys Technologies Limited

Pekon Building, Plot Y-13, Block EP, 4th Floor, Sector V, Salt Lake City, Kolkata 700 091, India

Tel: +91-33-4021-9600 | Fax: +91-33-4021-9690 | Web: www.axsystech.in | E-mail: axsys.tech@axsystech.in

WIDE OCEAN